

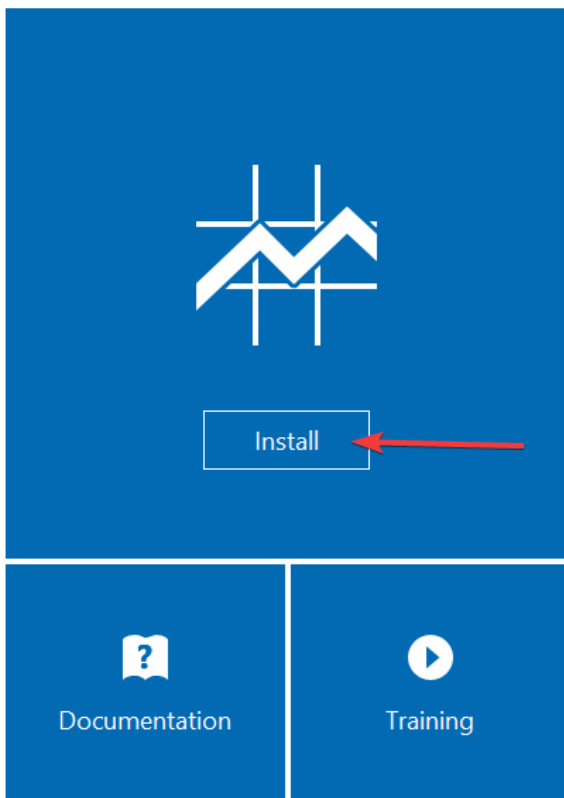
# Installer Veeam ONE 12

On télécharge l'ISO sur le site de Veeam.

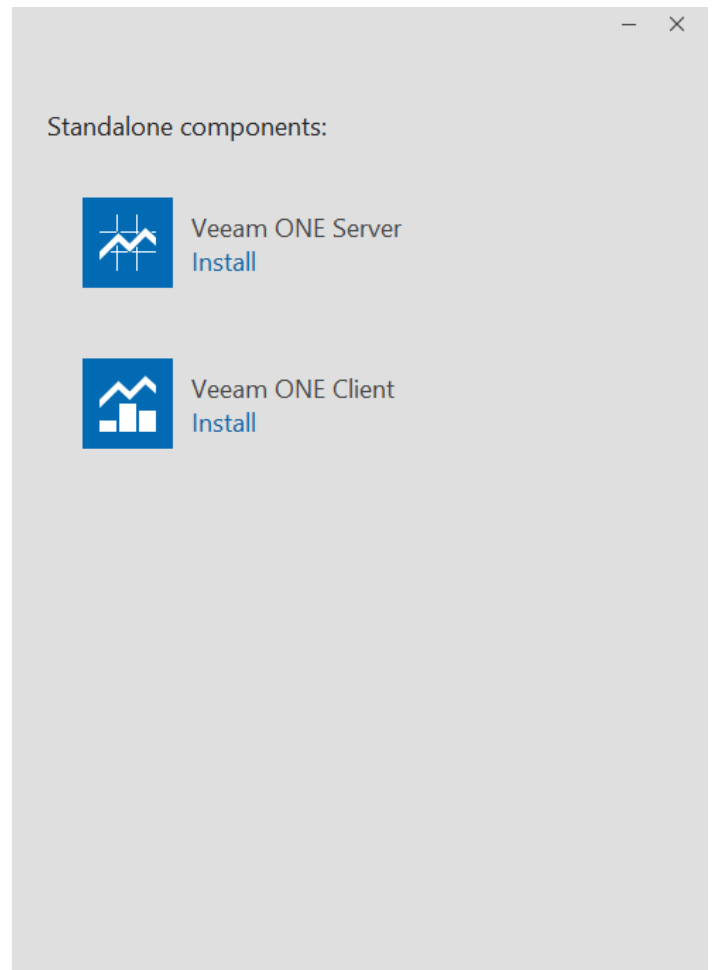
On exécute le setup présent sur l'ISO.

On clique sur "Install".

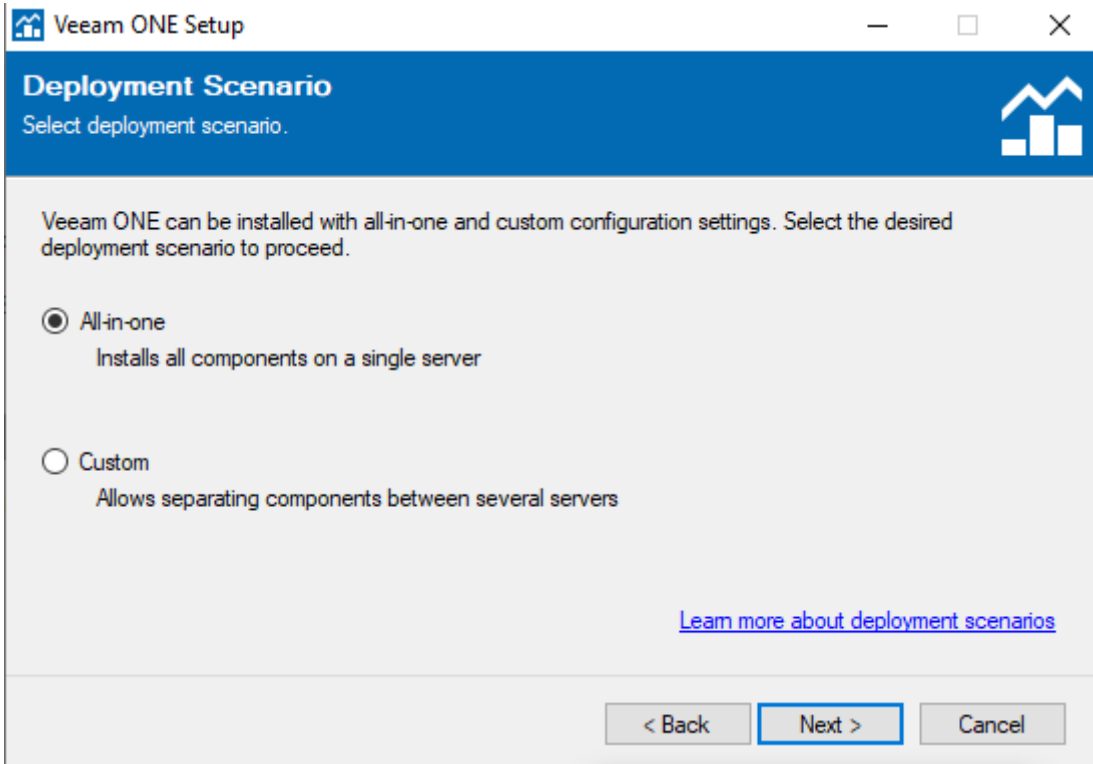
Veeam ONE 12



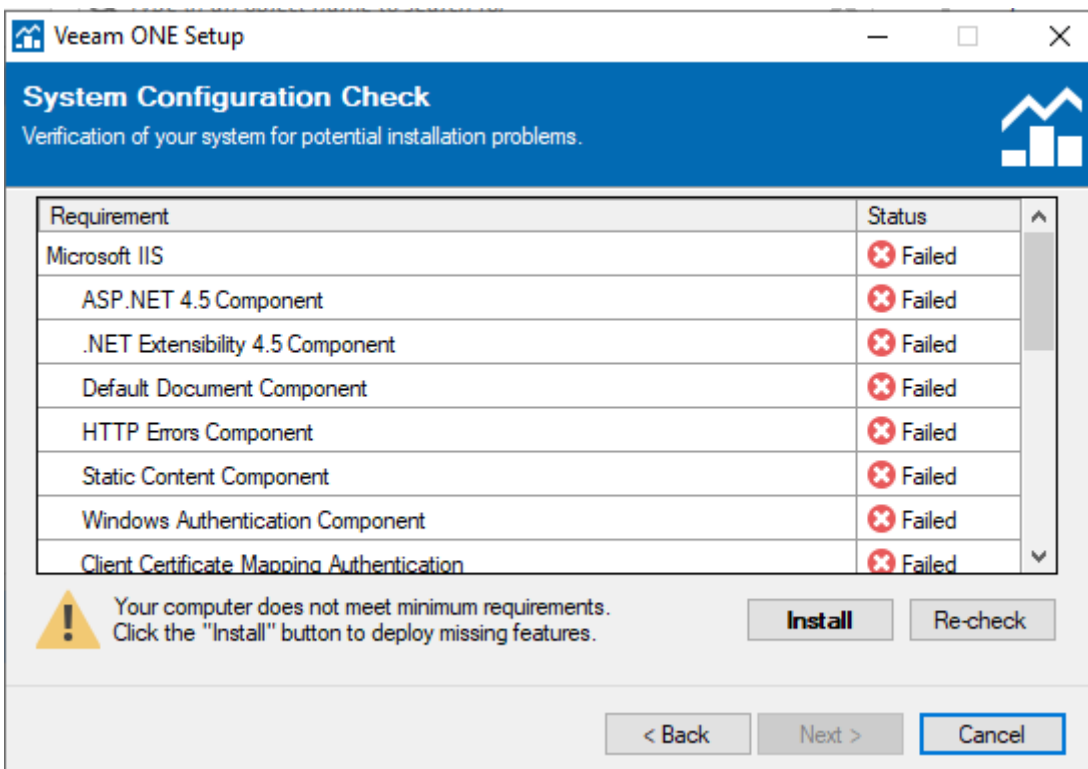
© Veeam Software Group GmbH. All rights reserved.



Si on nous demande d'installer les C++, on accepte. On clique ensuite sur "Accept", on choisit "All-in-one" et "Next".



Une vérification des prérequis s'effectue. On peut les installer en cliquant sur "Install".



On choisit notre l'emplacement.

Veeam ONE Setup

### Installation Path

Select Veeam ONE installation folder.

Install Veeam ONE to the following folder:

C:\Program Files\Veeam\Veeam ONE\ Browse...

Installation requires 667,04 MB of free disk space. Available space on selected disk is 31,83 GB.


< Back Next > Cancel

on rentre le compte de service. En production, il faut créer un compte dédié à ce service.


Veeam ONE Setup

### Service Account

Specify service account credentials.

 Specify username and password in DOMAIN\USERNAME format. The supplied account must have necessary privileges assigned. For the list of required privileges refer to Veeam ONE deployment guide.

Username: SRV-BACKUP01\Administrateur Browse...

Password: ..... 

< Back Next > Cancel

Si l'on a un serveur SQL dédié, on peut l'utiliser.

**Veeam ONE Setup**

### SQL Server Instance

Select SQL Server instance to create Veeam ONE database on.

☒ Install new instance of SQL Server (localhost\VEEAMSQL2017)

☐ Use existing instance of SQL Server (HOSTNAME\INSTANCE)

SRV-BACKUP01\VEEAMSQL2016 Browse...

Database name: VeeamONE Browse...

Connect to SQL Server using

☒ Windows authentication credentials of service account

☐ SQL Server authentication using the Login ID and password below:

Login ID: sa

Password:

< Back Next > Cancel

Si on a une licence, on peut la rentrer ici.

**Veeam ONE Setup**

### Operation Mode

Select operating mode and provide a license file.

Operating mode:

☐ Licensed mode (full functionality)

License file:  Browse...

☒ Community Edition (limited functionality)

☒ Update license automatically (enables usage reporting)

Download and install new licenses automatically when you renew or expand your contract. This requires sending the license ID, the installation ID, and workload usage counters to the Veeam licensing servers periodically. Successful usage reporting doubles the number of workloads you can exceed your installed license by.

[Learn more about product editions](#)

< Back Next > Cancel

On peut utiliser un certificat existant ou en créer un (auto-signé).

Veeam ONE Setup

### Connection Configuration

Specify ports and select certificate.

Veeam ONE monitoring service port:

Veeam ONE reporting service port:

Internal Web API port:

Website port:

Veeam ONE agent port:

Certificate:

< Back **Next >** Cancel

On définit le chemin du cache.

Veeam ONE Setup

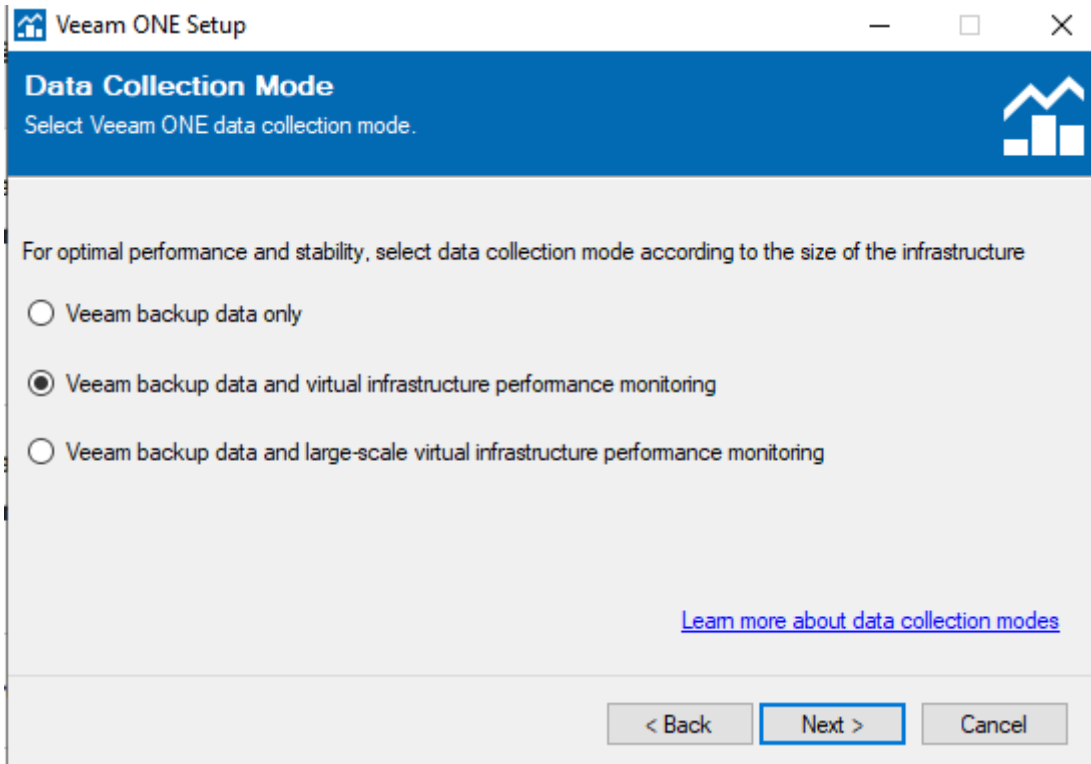
### Performance Data Caching

Select a directory to store cached performance data of virtual infrastructure objects.

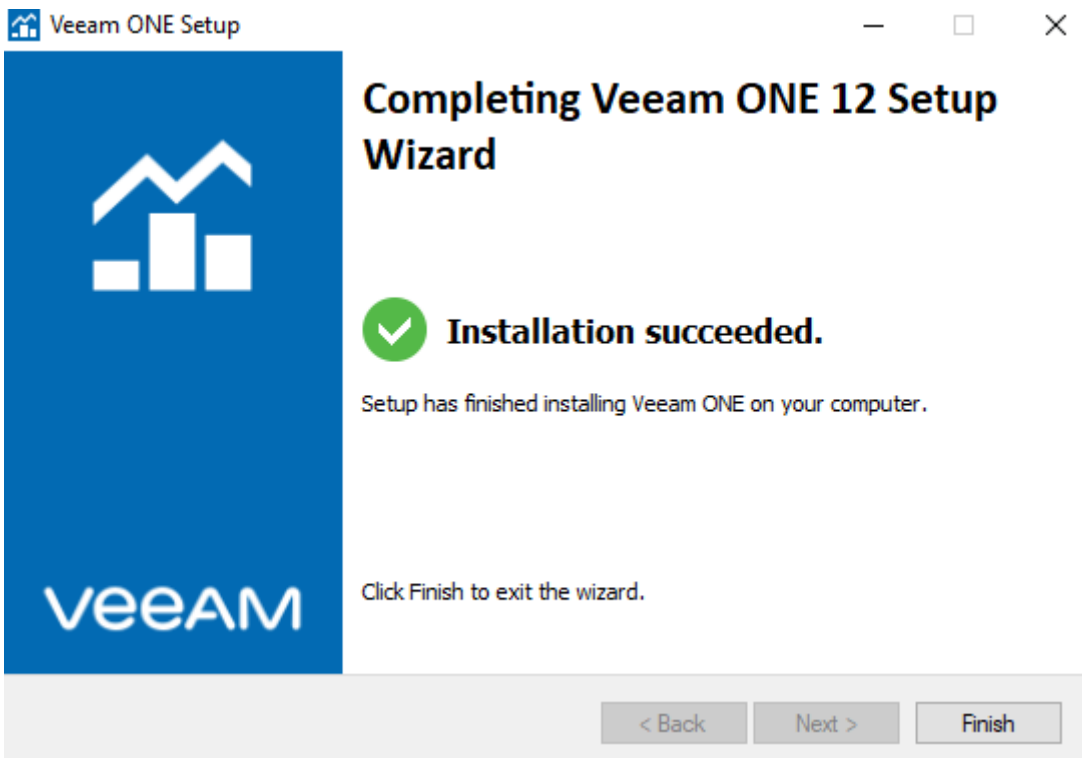
Path:

< Back **Next >** Cancel

On peut choisir le mode de récupération de données.



On vérifie et on clique sur "Install".



Un redémarrage est demandé.

Revision #3

Created 13 March 2023 19:43:31 by Khroners

Updated 13 March 2023 20:50:55 by Khroners